



PARTS

FRONT VIEW



Cushioned seat pad

Adjustable seat belts

Slots for additional leg straps

Foot rests

Child Carrier mounted on luggage rack

REAR VIEW

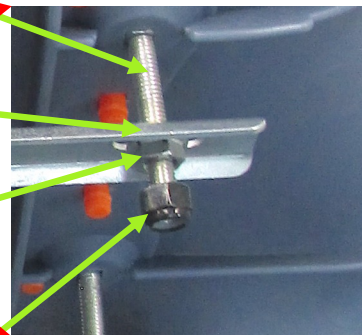


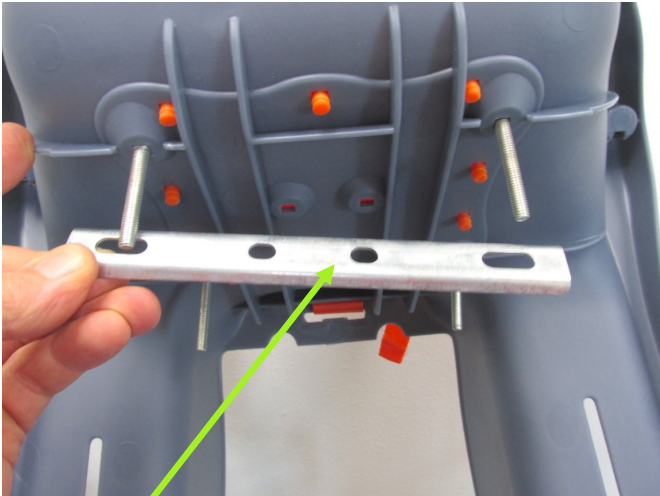
Carriage bolts (4)

Bracket (2)

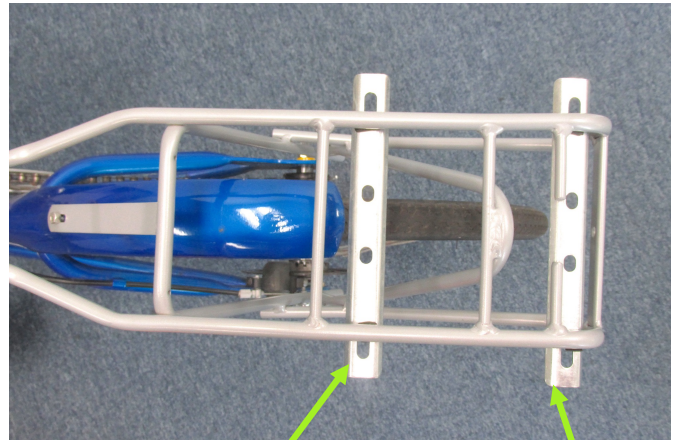
Flange nuts, 10 mm (4)

Nylon lock nuts, 10 mm (4)





1. Remove lock nuts, flange nuts and brackets from carriage bolts.



2. With the Child Carrier in place, the brackets under the top rail of the luggage rack will be as shown, with one bracket as far rearward as possible and the other bracket about 6" forward.



3. Set the Child Carrier on the luggage rack so that the carriage bolts straddle the top rail of the luggage rack on either side. Insert the brackets over the bolts and screw on the flange nuts. Tighten the nuts evenly side to side with a 10 mm open end wrench.



4. After the flange nuts have been tightened, screw on and tighten the nylon lock nuts with the 10 mm open end wrench.

WARNING

1. *The Child Carrier is not suitable for children under 8 months old.*
2. *The maximum suggested weight is 55 lb (25 kg).*
3. *Before use, make sure the Child Carrier is secured to the luggage rack.*
4. *Make sure your child is secured in the Child Carrier with the seat belts, so that when you come to a stop on your StreetStrider, your child stays in the Child Carrier.*