

StreetStrider

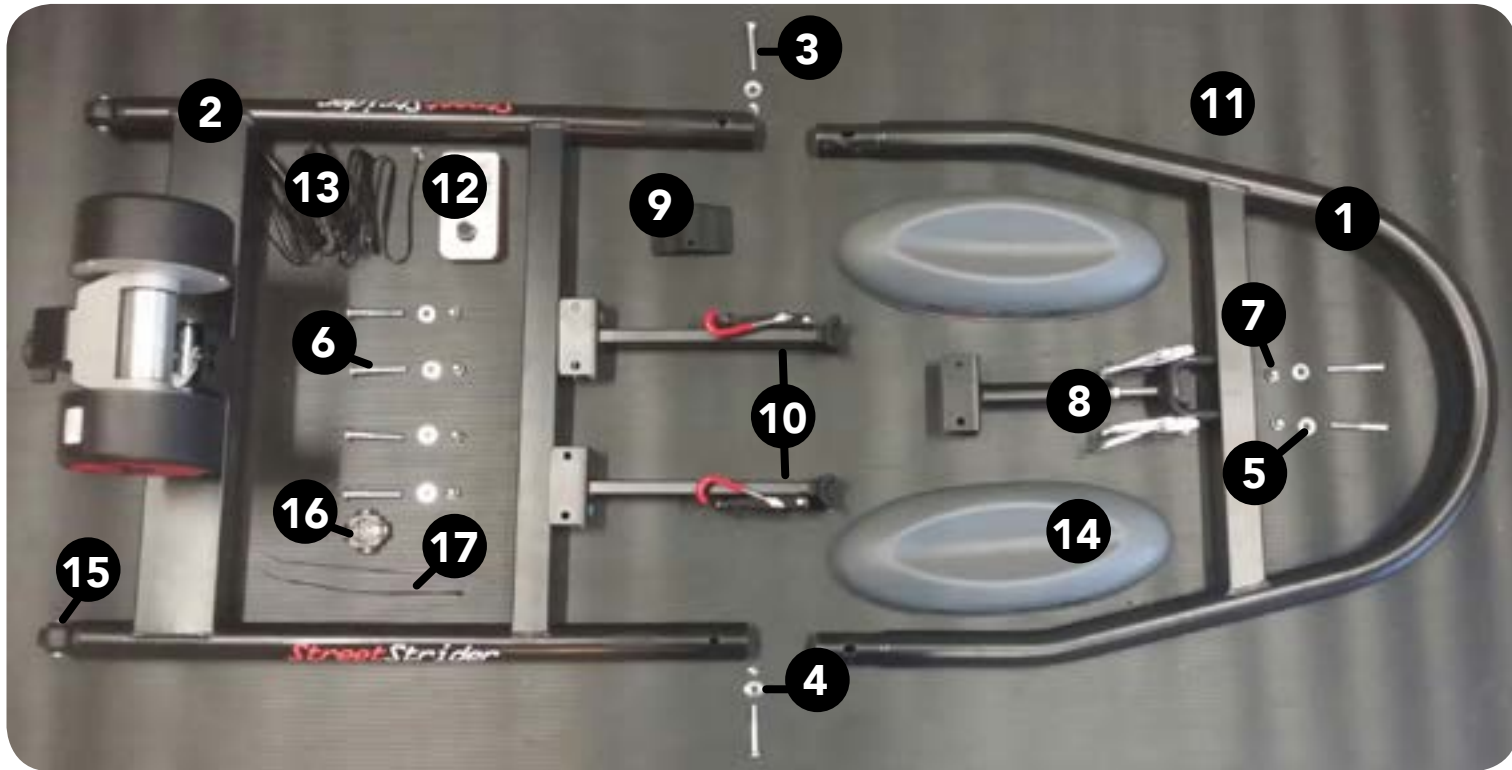
The Elliptical that **MOVES** You!



Watch the full assembly video at
www.StreetStrider.com/support

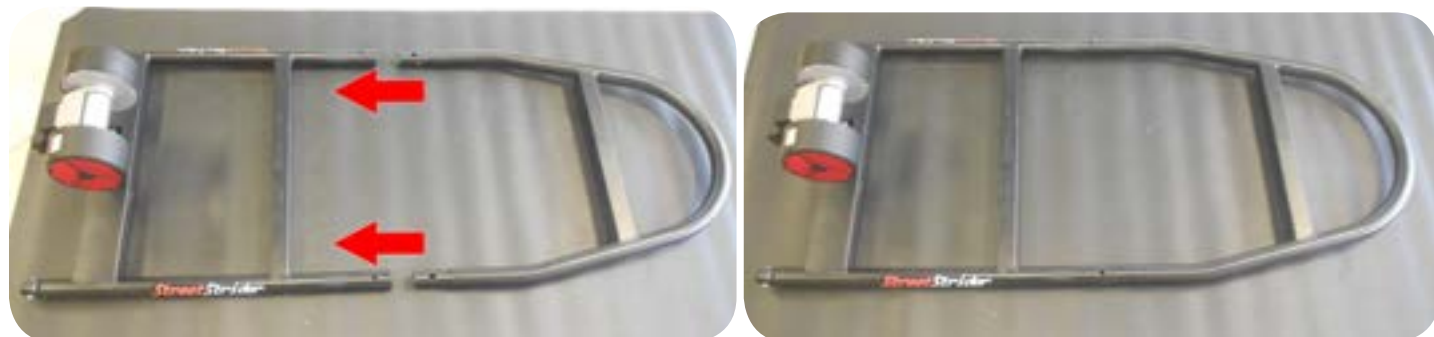
**INDOOR PACKAGE
ASSEMBLY GUIDE**

1 Check to make sure all parts needed for assembly are present.



- | | |
|----------------------------|---------------------------------|
| 1) Front Frame | 9) Main Frame Top Plate |
| 2) Rear Frame | 10) Chain Stay Podium (x2 L,R) |
| 3) Square Fitted Bolt (x2) | 11) Trainer Mat |
| 4) Rounded Washer (x2) | 12) Resistance Controller |
| 5) Flat Washer (x6) | 13) Resistance Controller Cable |
| 6) Standard Bolt (x6) | 14) Riser Blocks (x2) |
| 7) Acorn Nut (x8) | 15) Rear Wheels |
| 8) Main Frame Podium | 16) Bracket with Rubber Pad |
| | 17) Bracket Zip Ties |

2 Insert front frame (1) into rear frame (2).



3 Line up the bolt holes and insert the square fitted nuts (3) through the rounded washer (4) and tighten with acorn nuts (7) using wrench.



4 Put the main frame podium (8) onto front cross bar.



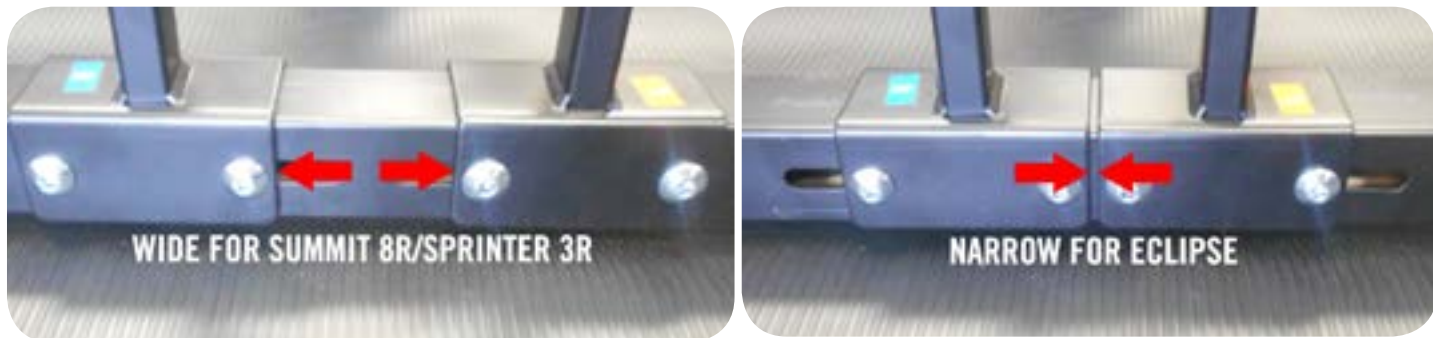
5 Secure the main frame podium (8) with standard bolts (6), flat washers (5) and tighten acorn nut (7) with wrench.



6 Place chain stay podiums (10) on the middle cross bar with the draw latch toward the sides. Secure with standard bolts (6), flat washers (5) and tighten acorn nut (7) with wrench.



7 The chain stay podiums (10) are designed to be spaced wide for use with the Summit 8r and the Sprinter 3r, or narrow for use with the Eclipse. Once spaced for your StreetStrider model, tighten acorn nuts (7) with wrench.



8 Position the chain stays of the StreetStrider frame into the cradle of rear chain stay podiums (10) and the center StreetStrider frame into the main frame podium (8)



9 Clamp the adjustable draw latches down onto the StreetStrider chain stays to secure them in the cradles.



10 After laying the main StreetStrider frame into the main frame podium (8) cradle, place the main frame top plate (9) across the frame and clamp the adjustable draw latches over each edge of the plate to secure the StreetStrider frame.



11 Raise the front wheels of the StreetStrider and place onto riser blocks (14)



- 12** Adjust the rear screw on the resistance assembly to force the roller against the rear tire of the StreetStrider.



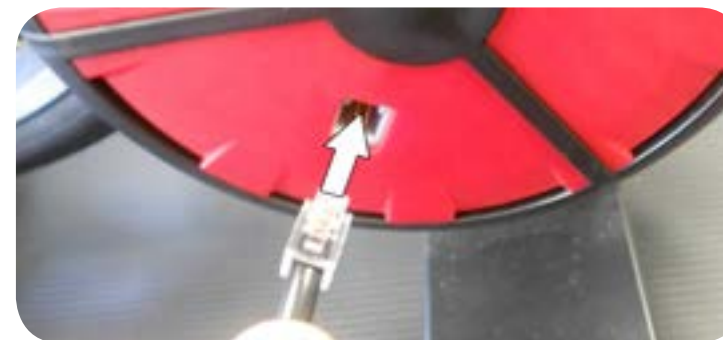
- 13** Place the rubber pad on the cross bar and position the bracket (16) on the rubber pad. Secure bracket (16) with zip ties (17).



- 14** Attach the resistance controller (12) console to the bracket by inserting and rotating 90 degrees.



- 15** Plug one end of the resistance controller cable (13) into the receptacle on the left side of of the resistance assembly.

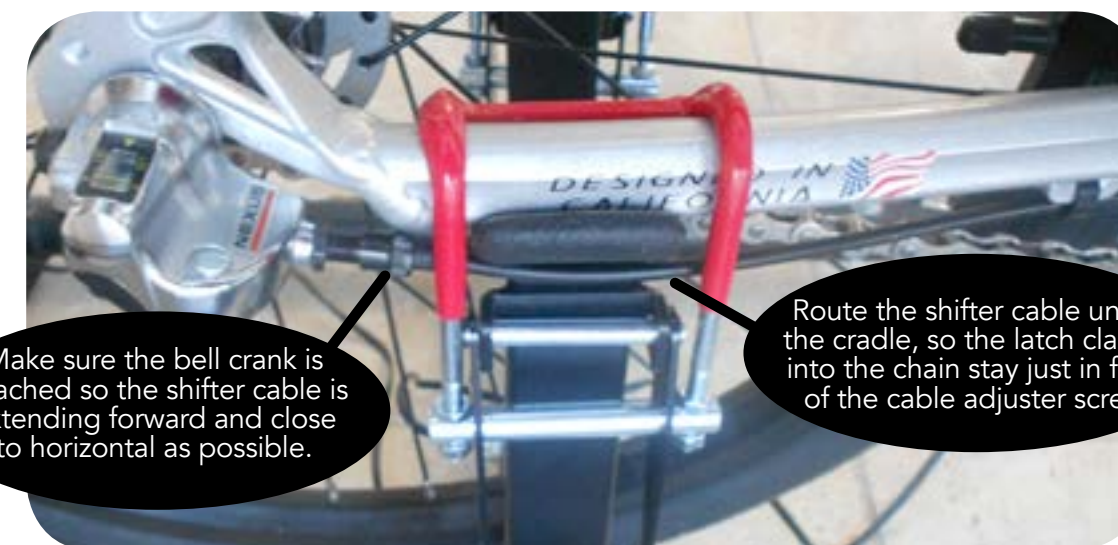


- 16** Plug the other end of the resistance controller cable (13) into the receptacle on the right side of the resistance controller (12).

NOTE: You can route the cable under the frame cross bars and up next to the head tube of the StreetStrider to prevent it from being entangled with the moving foot platforms.



- 17** Mounting the Sprinter 3r right chain stay onto the chain stay podium (10).



18

Finished Assembly



Watch the full assembly video at
www.StreetStrider.com/support



7042 North West Street, Suite 110, Fresno, CA 93711
1.800.348.0998 | www.StreetStrider.com

© WINTER 2014

Like Us On 

facebook.com/StreetStrider